

CORRIGENDUM

In the recent article by Gerschwitz-Eidt et al. (2023), the authors would like to correct the sequence of the Figures A1–A3 as follows:

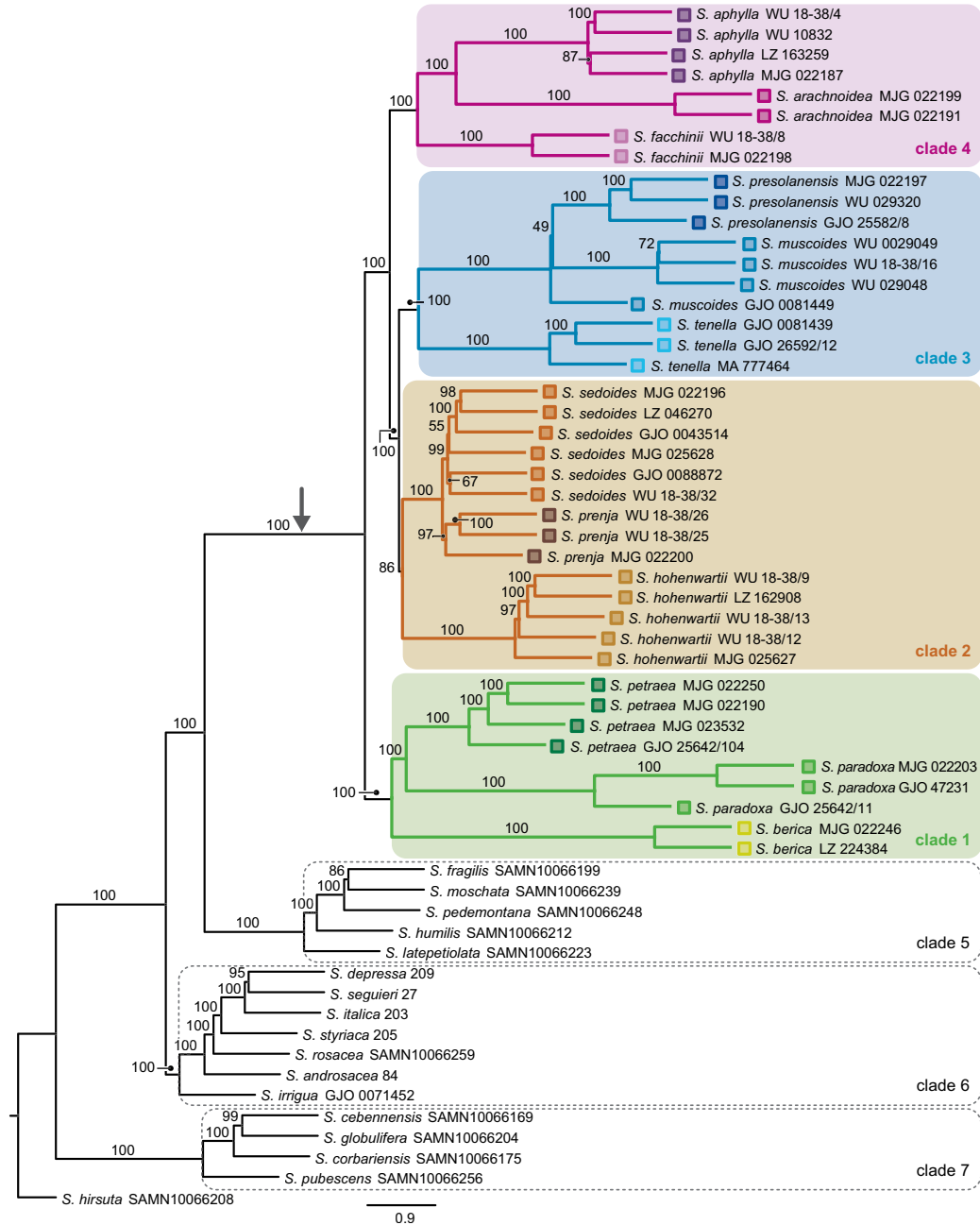


FIGURE A1 Summary coalescence species tree calculated in ASTRAL. The stem branch of subsection *Arachnoideae* is marked with an arrow.

This is an open access article under the terms of the [Creative Commons Attribution](https://creativecommons.org/licenses/by/4.0/) License, which permits use, distribution and reproduction in any medium, provided the original work is properly cited.

© 2023 The Authors. *Ecology and Evolution* published by John Wiley & Sons Ltd.

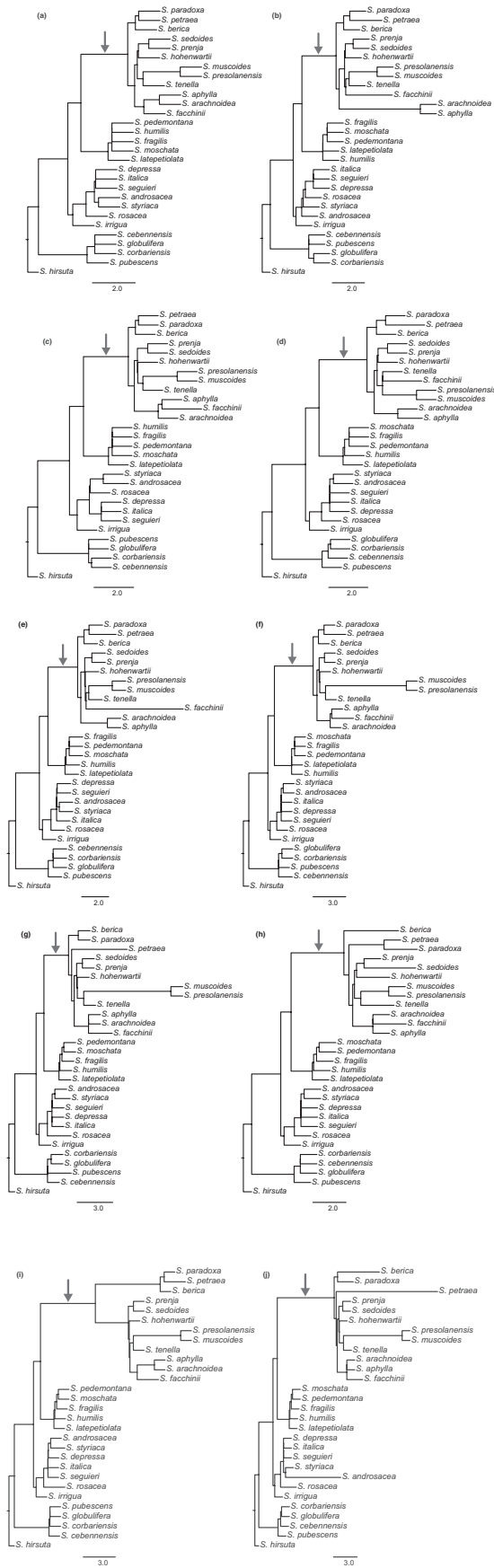
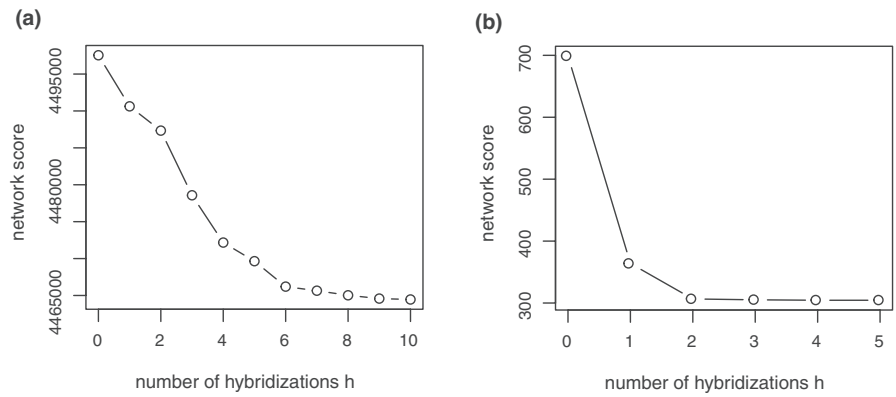


FIGURE A2 Cladograms of the major trees of 11 maximum pseudo-likelihood phylogenetic networks calculated in PhyloNet. The stem branch of subsection *Arachnoidea* is marked with an arrow.

FIGURE A3 Log pseudo-likelihood profiles for phylogenetic networks with (a) 58 and (b) 42 samples for different numbers of reticulate nodes.



The authors apologize for the error.

REFERENCE

Gerschwitz-Eidt, M. A., Dillenberger, M. S., & Kadereit, J. W. (2023). Phylogeny of *Saxifraga* section *Saxifraga* subsection *Arachnoideae* (Saxifragaceae) and the origin of low elevation shade-dwelling species. *Ecology and Evolution*, 13, e9728. <https://doi.org/10.1002/ece3.9728>