

In-Situ Contacting and Current-Injection into Samples in Photoemission Electron Microscopes

L. Heyne and M. Kläui

Fachbereich Physik, Universität Konstanz,

Universitätsstr. 10, D-78457 Konstanz, Germany

L. Le Guyader and F. Nolting

Swiss Light Source, Paul Scherrer Institut, 5232 Villigen PSI, Switzerland

(Dated: March 16, 2010)

Abstract

Studying the interaction of spin-polarized currents with the magnetization configuration is of high interest due to the possible applications and the novel physics involved. High resolution magnetic imaging is one of the key techniques necessary for a better understanding of these effects. Here we present an extension to a magnetic microscope that allows for in-situ current injection into the structure investigated and furthermore for the study of current induced magnetization changes during pulsed current injection. The developed setup is highly flexible and can be used for a wide range of investigations. Examples of current-induced domain wall motion and vortex core displacements measured using this setup are presented.

I. INTRODUCTION

The study of spin-torque phenomena resulting from the interplay of spin-polarized currents and magnetization has attracted much interest over the last years due to the exciting physics and the potential of new spin-torque based logic and storage devices [1, 2]. For instance in magnetic wires domain walls are formed at the interface of regions with opposite magnetization (domains). These domain walls can be moved by injected current pulses in the direction of the electron flow (See [3] and references therein).

Studying current-induced magnetization switching is most often achieved by transport measurements employing the AMR-effect [4–7] due to the measurement simplicity. However transport measurements yield only limited information, as they do not reveal the internal magnetic spin structure. This means for instance, current-induced domain wall spin structure changes can only be studied by magnetic imaging [8]. Magnetic imaging by X-ray Magnetic Circular Dichroism - Photo Emission Electron Microscopy (X-PEEM) is a powerful technique that is used to map the internal magnetization configurations in nanoscale structures [9, 10]. The emission rates of the photoelectrons created by the incident circularly polarized X-ray photons depend on the magnetic orientation inside the material with respect to the X-ray polarization. Thus imaging the spatially resolved emission rates for the two X-ray polarities yields the magnetic contrast of the sample [9]. However, commercial microscopes do not provide the possibility to contact the investigated structures to conduct transport measurements or to inject current.

In this paper we present a specially developed setup for the widely used ELMITEC PEEM that greatly extends the possibilities of the microscope and allows for in-situ current injection of microsecond and nanosecond short current pulses. In addition, small magnetic

fields can be applied and by gating the imaging unit, we can study the magnetic system during the pulse injection. This setup is used to image domain wall motion due to current pulses and vortex core displacements during current injection.

II. EXPERIMENTAL

The PEEM employed is a commercial ELMITEC-PEEM widely used at various synchrotron sources (Type SPE LEEM III [11]). It offers high resolution magnetic imaging. However, one drawback in this setup is that the sample is not at ground potential but at a high voltage (HV) of about 20 kV. This has the advantage that the magnetic lenses of the microscope are at ground potential, but complicates access to the sample, which is at 20 kV. In this paper, the following modifications to the PEEM are presented that allow for a flexible in-situ current injection into the structure investigated.

- A special sample holder that provides four electrical contacts and allows for convenient contacting of the structure.
- A pulse injection unit that fits into the 19" HV rack and allows for the injection of microsecond short current pulses into different structures. An additional gating unit that synchronizes the imaging with the current pulses allows for imaging during current pulse injection.
- A fast photo diode fitted into the sample holder and triggered by a femtosecond laser pulse to generate about 3 ns short current pulses.

Prior to these implementations, nanosecond pulse injection has not been possible at all and microsecond pulses could only be injected by switching off the high voltage, opening the HV-rack (making sure that the HV was completely off) and injecting a current pulse using a

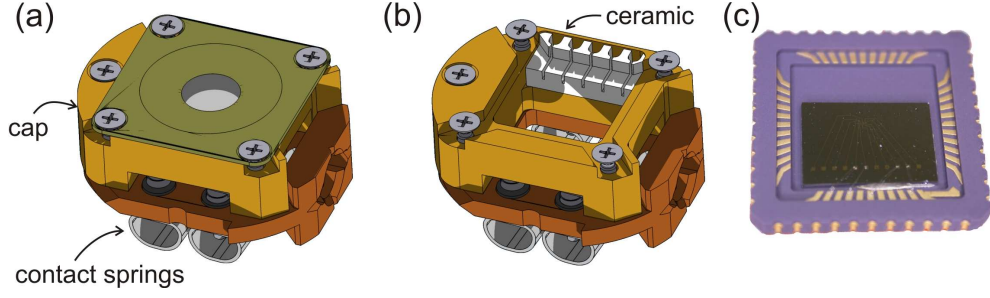


FIG. 1: (a) Technical drawing of the sample holder with chip carrier capability. Four flexible contacts at the bottom of the sample holder lead to the sample. (b) Sample holder with removed cap and chip carrier showing the hollow structure to insert the magnetic coil and the ceramic part that contains the contacts for the chip carrier. (c) Image of the chip carrier with a mounted sample and wires bonded between sample and chip carrier.

normal pulse generator setup assuming that somehow the heating filament of the standard sample holder was connected to the sample. Our new setup explained in the following drastically reduces the workload, and the time necessary for the current injection is reduced from more than 10 minutes to a few seconds. The next sections discuss these modifications in more detail.

A. Sample holder

The sample holder conventionally used includes a heating filament and a thermocouple, but no additional contacts. A special sample holder design is thus required as the original holder does not provide for contacting of the sample. The new holder uses the contacts initially designed for the heating of the sample and for measuring the sample temperature and these contacts are rewired to connect to the sample and also for driving a small magnetic coil integrated into the sample holder. The sample is not directly mounted on the sample

holder but on a chip carrier which allows for an easy and flexible exchange of the samples. Technical drawings of the sample holder are shown in Fig. 1. In Fig. 1(a) the sample holder is shown with a mounted sample and the cap. The hollow structure of the sample holder is visible in Fig. 1(b) where the cap and the chip carrier are removed. This geometry entails the possibility to insert coils into the sample holder for in-situ application of small magnetic fields. Depending on the coil geometry, either in-plane fields or out-of-plane fields of up to 200 G can be applied. A photograph of the chip carrier with a mounted sample is shown in Fig. 1(c). The sample structures are wire bonded to the chip carrier.

To prevent discharges it is important that the sample holder contains as little insulating materials as possible to avoid charging. The ceramic part that supports the contacts connecting the chip carrier is therefore as small as possible and shielded by metal from all sides [see Fig. 1(b)]. The cap further shields the bond wires from the applied HV to further reduce the risk of discharges.

Additionally a small photo diode can be mounted on the sample holder which is required for the generation of nanosecond short current pulses (see section C).

B. Microsecond Pulse Injection

Since the sample is at approximately 20 kV with respect to the ground potential, special considerations have to be done concerning the pulse injecting unit. The original cables connecting the PEEM and the HV rack have a high frequency 3dB-cutoff at about 800kHz, which limits the minimum pulse length to a few microseconds.

The original power supply inside the HV-rack used for the heating of the samples is removed and replaced by a tailor-made unit. A schematic of the total setup is shown in Fig. 2. The current pulses are produced by a commercial function generator (Agilent 33250A)

and subsequently amplified by a factor of 20 up to ± 200 V. This home built amplifying stage is necessary to achieve the high current densities required for the experiment.

To drive the magnetic coil inside the sample holder, a small power supply is also integrated into the setup. Depending on the experiments, either short and strong field pulses are required to reset the magnetization and the actual experiment is done at zero field or small permanent fields are applied to set a preferred magnetization direction. The former is achieved best by an air coil without any remanent field, whereas for the latter task a coil with a mu-metal core is more suited, since it results in higher fields. The pulse generator and the coil are controlled by a microcontroller (type ATmega644 [12]). Via a glass fiber connection all functions can be set externally using a home-made software package. By imaging before and after pulse injection, this setup is suited to study permanent changes of the magnetization induced by current injection, such as domain wall motion.

However, reversible changes of the magnetization during pulse injection cannot be studied, since the system will relax back to the stable ground state after the excitation by the current pulse. Imaging the excited state would require injection of a DC-current and simultaneous imaging. Due to the required high current densities (about $1 \cdot 10^{12}$ A/m²) and the resulting heating this is not possible. A solution is the injection of a continuous pulse train with microsecond long pulses and sufficient cooling time in between. Switching on the imaging unit only during these current pulses results in an image of the excited state. The Joule heating is reduced by the pulse train duty cycle at the cost of an increased exposure time.

The PEEM uses a multi channel plate (MCP) to amplify the emitted photo electrons before converting them into visible light by a phosphorous screen. The MCP is typically operated at about 1500 V. Due to the non-linear characteristic of the MCP, it is effectively switched off at voltages below 1100 V. Thus it can be switched on and off by a gating voltage

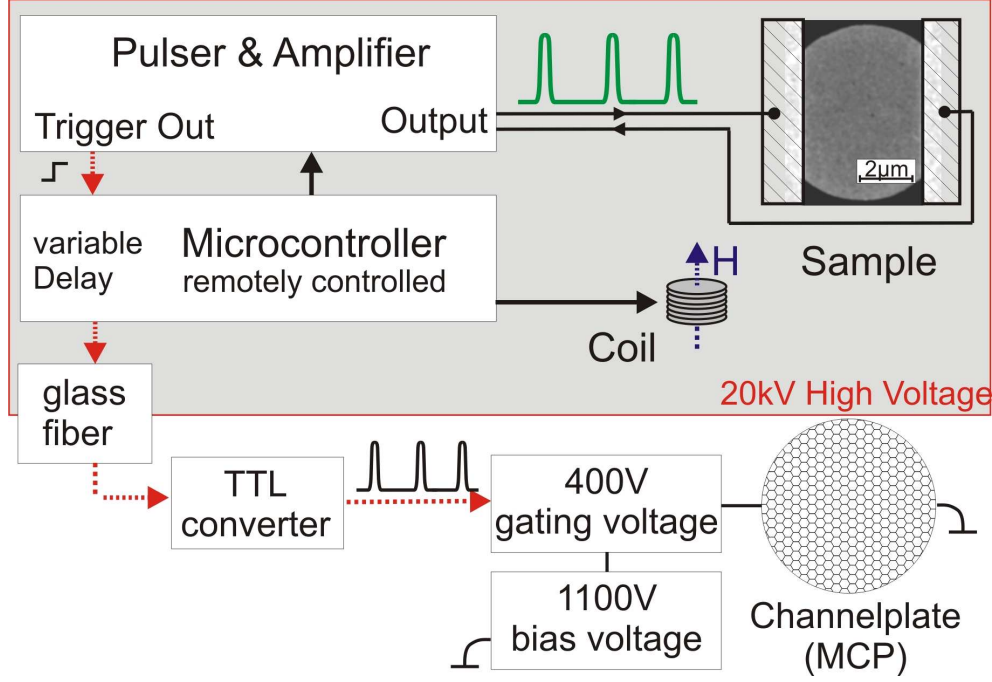


FIG. 2: Schematic overview of the microsecond pulse injection experiment and the MCP gating experimental setup. A pulse generator in combination with a amplifier is used to inject current pulses into the sample. A trigger signal synchronized to the current pulses is passed to the external gating setup to make sure that the imaging unit is switched on and off accordingly to the current pulse timing.

The pulse generator and the trigger signal are controlled by an external computer via a glass fiber cable and a microcontroller. The microcontroller also controls the applied field via the current through the coil integrated into the sample holder.

of about 400 V on top of a constant bias voltage of 1100 V. This fast 400 V switch is controlled by a TTL-signal. A trigger signal from the pulse generator is used by the microcontroller to generate a signal for the gating of the MCP. The timing can be set so that the imaging unit is switched on during the current pulses resulting in the excited state being imaged. Alternatively the timing can be reversed so that in between the current pulses the ground

state is imaged. Since the image is acquired over a large number of current pulses, this experiment requires reproducible states, similar to pump-probe experiments.

C. Nanosecond Pulse Injection

Due to the high frequency limitations of the cables connecting the PEEM with the HV-rack, nanosecond short current pulses cannot be injected into the structures via these cables. The only solution is to directly generate such short pulses close to the sample. This is done by a fast laser pulse that triggers a photo diode mounted on the sample holder. The setup is schematically shown in Fig. 3.

The photo diode is biased by a voltage U_b of about 10 V supplied via the contacts of the sample holder (see Fig. 3(a)). The charge carriers created in the diode by the laser pulse can either be injected into a strip line below the sample to induce a magnetic field pulse or directly into the structure to study spin-torque phenomena. The laser operates at a repetition rate of 5 MHz and produces pulses shorter than 100 fs. A pulse picker can be used to select single pulses, making it possible to inject one short pulse instead of a continuous pulse train. The pulse shape is shown in Fig. 3(b). The 3 ns short current pulse has a very fast rise time below 100 ps.

In continuous mode, the laser pulses can be synchronized to the X-ray pulses with a 500 MHz signal that is supplied by the synchrotron [10]. In normal operation, an equally intense X-ray pulse is emitted every 2 ns, corresponding to the 500 MHz signal. In the hybrid mode available at the SLS, a special electron bunch filling pattern is used (see Fig. 3). One out of the 390 electron bunches circulating the synchrotron is especially intense and the adjacent bunches have extremely low intensity. By gating the micro channel plate accordingly, only this bunch will contribute to the PEEM image [10]. Changing the delay

between this X-ray beam and the laser pulse that leads to the excitation of the sample thus makes it possible to study the temporal evolution of the system after the excitation [10, 13, 14].

Thus two types of experiment can be carried out: single nanosecond pulses can be injected and the resulting permanent changes of the spin structure can be imaged or time-resolved pump probe measurements can be carried out. The latter requires a stable magnetic ground state to which the system can relax after the excitation.

III. RESULTS

Employing the two setups explained above allows for new experiments probing current induced magnetization manipulation. In this section one example is given for each of the setups showing the flexibility of the presented experimental scheme.

A. Current-Induced Vortex Core Displacement

In most disk geometries made of a soft magnetic material such as Permalloy ($\text{Ni}_{80}\text{Fe}_{20}$), the magnetic ground state is found to be the vortex state (see Fig. 4) . In this configuration the magnetization is curling around the center, the so called vortex core. A micromagnetic simulation of a vortex core is shown in the inset of Fig. 4(a). The color code and the arrows indicate the in-plane magnetization direction. To minimize the exchange energy, this vortex core tilts out-of-plane as visible in the simulation. This structure is quite stable and can be treated as a quasi particle [15]. The study of its response to external fields and injected currents helps to gain a better understanding of the processes involved. So far the excitation of a vortex has been studied using AC magnetic fields or currents, but a study of the effect of

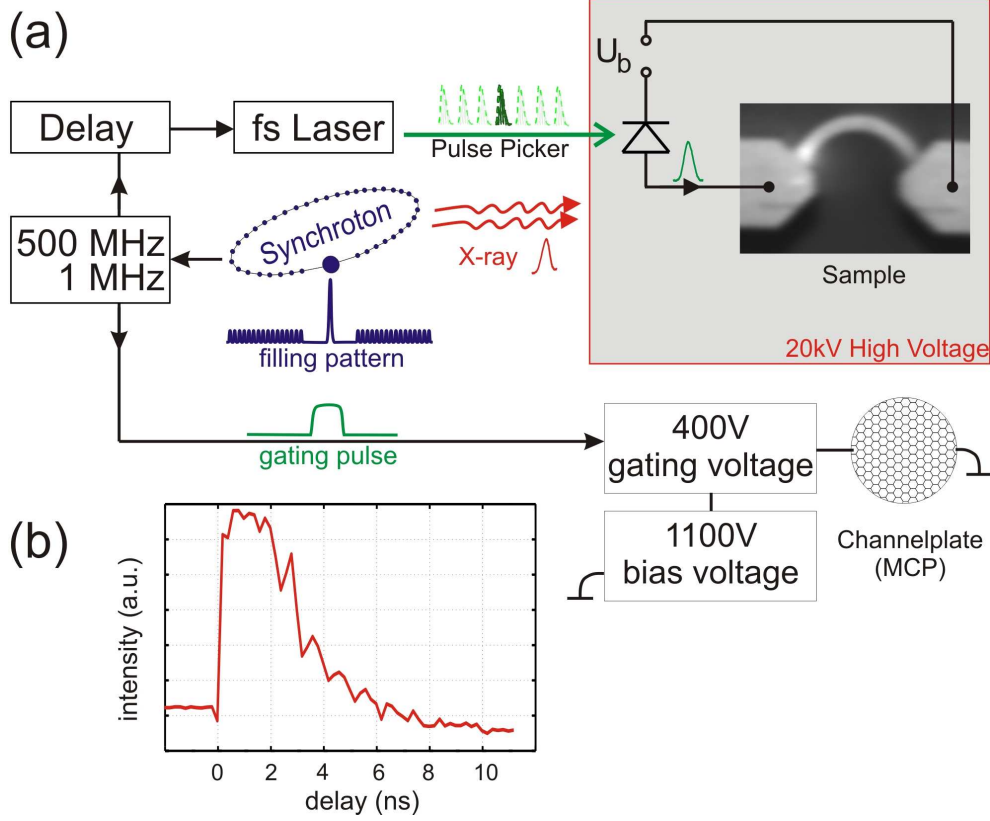


FIG. 3: (a) Setup of the laser pump-probe experiment. In the hybrid synchrotron mode, one electron bunch and the corresponding X-ray pulse is particularly intense, and the MCP is only switched on during this pulse. The laser pulses are synchronized to this pulse with a variable delay to conduct time resolved experiments. Additionally, the pulse picker can select single laser pulses.

(b) Shape of the current pulse. The rise time is below 100 ps and the pulse length is about 3 ns

DC currents injected into the structure was missing. It is predicted that such a study allows one to determine the size of the non-adiabaticity parameter β [16, 17]. The knowledge of this parameter is important for a better understanding of the related spin torque effect.

This study is complicated by the fact that the required high current densities result in excessive Joule heating and therefore limit the maximum pulse length to below 1 ms. The setup presented above allows for injecting current pulse trains with pulse lengths of 10-100 μ s and to image the investigated structure only during these pulses. Since the magnetization

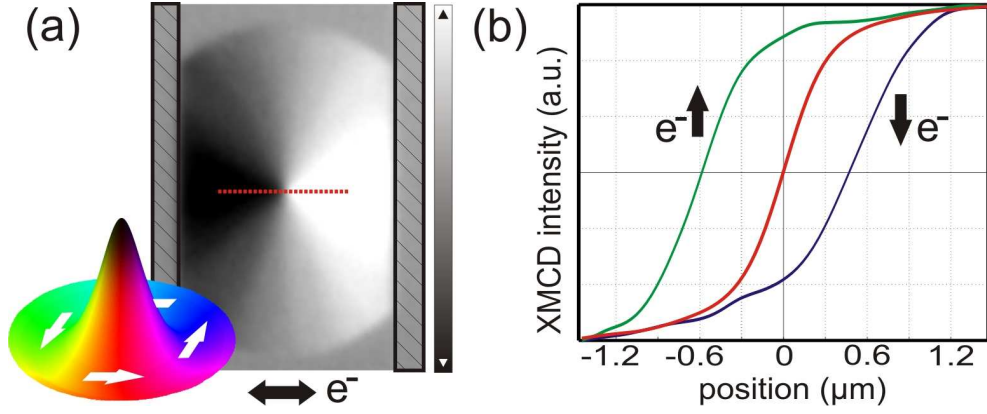


FIG. 4: (a) X-PEEM image of the centered clockwise vortex at zero current in a $6\mu\text{m}$ wide and 30 nm thick Permalloy disk. Gold contacts (shaded) to the left and to the right are used for current injection. (b) Line scans across the vortex core for the centered core (red) and for a current density of $j = +0.8 \cdot 10^{12} \text{ A/m}^2$ (blue) and $j = -0.8 \cdot 10^{12} \text{ A/m}^2$ (green). The red line scan of the centered vortex was taken along red dotted line in (a).

dynamics takes place on a nanosecond timescale, these current pulses can be considered as DC-currents. The structure used is presented in the schematic drawing in Fig. 2, where a scanning electron microscopy image of a 30 nm thick Permalloy disk with a diameter of $6\mu\text{m}$ is shown. The disk is contacted by Au pads for current injection at the left and right. An X-PEEM image of the magnetic initial vortex configuration with a centered VC is shown in Fig. 4(a). Line scans across the vortex core are shown in Fig. 4(b). At an injected current density of about $j = \pm 0.8 \cdot 10^{12} \text{ A/m}^2$ the original vortex (red line scan) is shifted. Reversing the current direction reverses the VC displacement as also expected by the theory [18]. First measurements indicate that the non-adiabaticity parameter β is much larger than the damping constant α [19], revealing that the non-adiabaticity for systems containing large magnetization gradients is on a par with the adiabatic spin-torque, which was previously believed to dominate. For theoretical models this means that spin relaxation,

which predicts β to be of the order of α is not sufficient but non-adiabatic transport has to be considered as a source for β [20].

B. Current-induced Domain Wall Motion

Using the setup explained in Section IIc we have studied the current-induced DW motion using 3 ns short current pulses [21]. An SEM image of the curved wire is shown in Fig. 3. To create a DW prior to the current injections, an external magnetic field is applied in the vertical direction. After reducing the field to zero, a DW is formed at the center of the wire. An X-PEEM image of the initial configuration is presented at the top of Fig. 5 showing a vortex wall at the wire center. To visualize the spin structure, the inset in the lower left shows a micromagnetic simulation of a vortex wall confined in a wire with the same configuration. The magnetization curls around the center of the wall, the vortex core. Once the initial configuration is imaged, single current pulses are injected into the structure. The result of a series of injections is presented by the image series in Fig. 5. Current pulses were injected between adjacent images (from top to bottom). After five injections, the DW is displaced by about $2\mu\text{m}$. The average measured displacement per current pulse is 400 nm. This corresponds to an average DW velocity of $v = 130\text{ m/s}$ (3 ns pulse length).

These high velocities are attributed to the very steep rise time of our current pulses and the associated additional spin torque [21] and are in contrast to the low observed domain wall velocities using microsecond long current pulses [8, 22]. In addition, DW transformations are observed and the resulting complicated domain walls appear to be moving with the same velocity (bottom three images in Fig. 5).

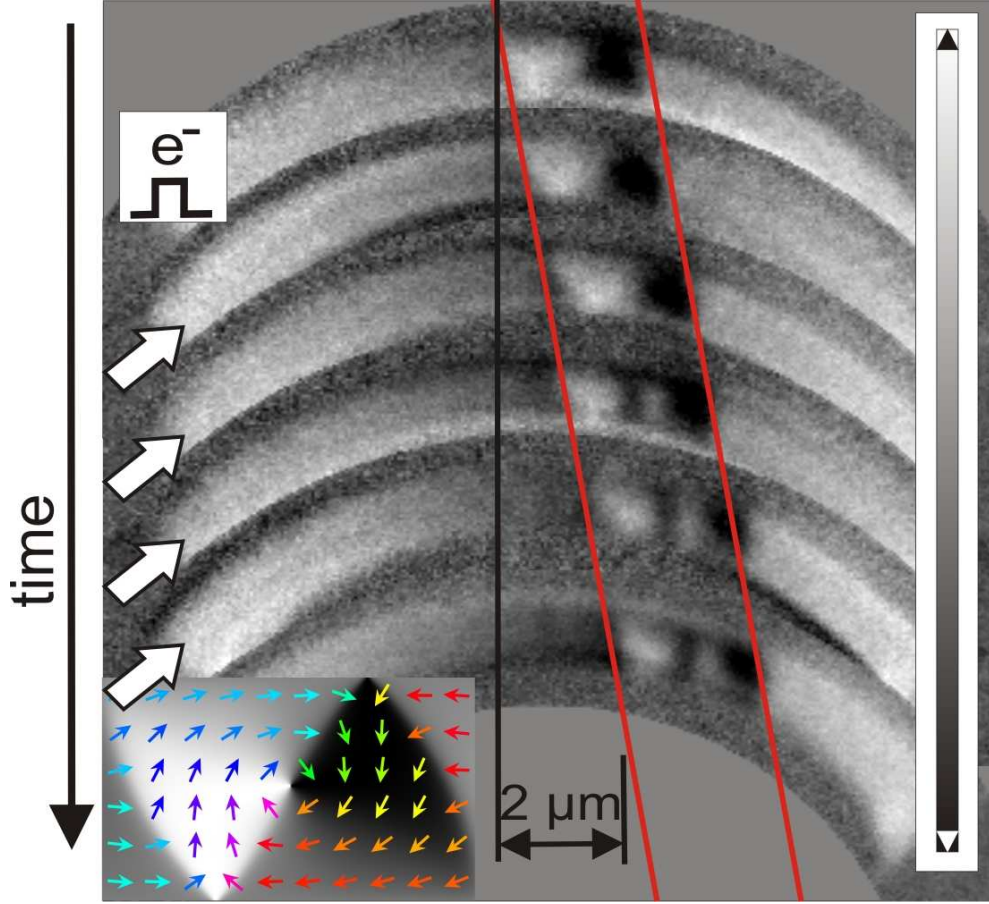


FIG. 5: X-PEEM image series of a permalloy wire ($1\ \mu\text{m}$ wide and $40\ \text{nm}$ thick) containing a VW. The top image shows the configuration after the initialization by a short vertical field pulse. The X-PEEM images were taken with vertical contrast (see gray scale bar at the right). Current pulses were injected between adjacent images (from top to bottom). After the third pulse, the DW is transformed to a double VW that continues moving. (Partly from Ref. [21])

IV. CONCLUSION

In conclusion, we have presented a new measurement setup that allows for a study of the interaction of injected currents with the local magnetization in structured samples by using high resolution X-PEEM imaging. Stable magnetic configurations such as magnetic vortices in disks can be excited by a current and reversibly change their configuration. For instance

an injected current displaces the vortex core, but after the current is switched off, the core relaxes back to its initial position. Due to the required high current densities and the excessive Joule heating, the imaging of this excited state which has not been possible previously. By using only microsecond long current pulses and gating the imaging unit accordingly, we succeeded in imaging the reversible current-induced vortex core displacement. This yields important information about the relative strengths of the spin torque terms.

The in-situ injection of single nanosecond short current pulses is made possible by the use of a fast photo diode in combination with a fs-laser and a specially designed sample holder. The current pulses are created close to the sample and have a steep rise time of about 100 ps. This setup has been used successfully to study the current-induced domain wall motion in permalloy wires, which highlights the importance of the pulse shape for the resulting domain wall velocities. The setup has reached a stage of maturity where it is user friendly, reliable while retaining its flexibility to study various aspects of the interaction of spin-polarized currents and the magnetization in photoemission electron microscopes. Future developments could include a lock-in amplifier to measure the resistance with high precision in-situ and replacing the contacts with high frequency cables so that an even more flexible setup results, which would open up new opportunities and eventually become a user facility at synchrotron facilities.

ACKNOWLEDGMENTS

Support by F. Kronast is acknowledged for the design of the sample holder. We thank A. Locatelli from the ELETTRA synchrotron and S. Dhesi from the DIAMOND synchrotron for fruitful discussions. The authors further acknowledge financial support by the German

Science Foundation (SFB 767, KL1811), the European Research Council (Grant No. ERC-2007-Stg 208162) and the German National Academic Foundation (LH). Part of this work was carried out at the Swiss Light Source and at BESSY.

- [1] S. S. P. Parkin, M. Hayashi, and L. Thomas. Magnetic domain-wall racetrack memory. *Science*, 320:190–194, 2008.
- [2] D. A. Allwood, G. Xiong, C. C. Faulkner, D. Atkinson, D. Petit, and R. P. Cowburn. Magnetic domain-wall logic. *Science*, 309:1688, 2005.
- [3] M. Kläui. Head-to-head domain walls in magnetic nanostructures. *J. Phys.: Condens. Matter*, 20:313001, 2008.
- [4] J. Grollier, P. Boulenc, V. Cros, A. Hamzić, A. Vaurès, A. Fert, and G. Faini. Switching a spin valve back and forth by current-induced domain wall motion. *Appl. Phys. Lett.*, 83(3):509–511, 2003.
- [5] M. Laufenberg, W. Buhrer, D. Bedau, P.-E. Melchy, M. Klauui, L. Vila, G. Faini, C. A. F. Vaz, J. A. C. Bland, and U. Rudiger. Temperature dependence of the spin torque effect in current-induced domain wall motion. *Phys. Rev. Lett.*, 97(4):046602, 2006.
- [6] Luc Thomas, Masamitsu Hayashi, Xin Jiang, Rai Moriya, Charles Rettner, and Stuart S. P. Parkin. Oscillatory dependence of current-driven magnetic domain wall motion on current pulse length. *Nature*, 443:197, 2006.
- [7] T. Ishida, T. Kimura, and Y. Otani. Current-induced vortex displacement and annihilation in a single permalloy disk. *Phys. Rev. B*, 74(1):014424, 2006.
- [8] L. Heyne, M. Kläui, D. Backes, T. A. Moore, S. Krzyk, U. Rüdiger, L. J. Heyderman, A. Fraile Rodríguez, F. Nolting, T. O. Mendes, M. Á. Niño, A. Locatelli, K. Kirsch, and R. Mattheis.

- Relationship between nonadiabaticity and damping in permalloy studied by current induced spin structure transformations. *Phys. Rev. Lett.*, 100(6):066603, 2008.
- [9] J. Stöhr, B. D. Wu, Y.; Hermsmeier, M. G. Samant, G. R. Harp, S. Koranda, D. Dunham, and B. P. Tonner. Element-specific magnetic microscopy with circularly polarized x-rays. *Science*, 259:658–661, 1993.
- [10] C. Quitmann, J. Raabe, C. Buehler, M. Buess, S. Johnson, F. Nolting, V. Schlott, and A. Streuna. Measuring magnetic excitations in microstructures using x-ray microscopy. *Nuclear Instruments and Methods in Physics Research A*, 588:494–501, 2008.
- [11] Elmitec Elektronenmikroskopie GmbH. <http://www.elmitec-gmbh.com/>.
- [12] Lutz Heyne. *Manipulation of Magnetic Domain Walls and Vortices by Current Injection*. PhD thesis, Universität Konstanz, 2010.
- [13] J. Raabe, C. Quitmann, C. H. Back, F. Nolting, S. Johnson, and C. Buehler. Quantitative analysis of magnetic excitations in landau flux-closure structures using synchrotron-radiation microscopy. *Phys. Rev. Lett.*, 94(21):217204, Jun 2005.
- [14] J. Rhensius, L. Heyne, D. Backes, S. Krzyk, L. J. Heyderman, L. Joly, F. Nolting, and M. Kläui. Imaging of domain wall inertia in permalloy half-ring nanowires by time-resolved photoemission electron microscopy. *Phys. Rev. Lett.*, 104:067201, 2010.
- [15] D. L. Huber. Dynamics of spin vortices in two-dimensional planar magnets. *Phys. Rev. B*, 26(7):3758–3765, Oct 1982.
- [16] B. Krüger, M. Najafi, S. Bohlens, R. Frömter, D. P. F. Möller, and D. Pfannkuche. Proposal of a robust measurement scheme for the non-adiabatic spin torque using the displacement of magnetic vortices. *arXiv:0905.3141v1*, 2009.
- [17] Jung-Hwan Moon, Dong-Hyun Kim, Myung Hwa Jung, and Kyung-Jin Lee. Current-induced

- resonant motion of a magnetic vortex core: Effect of nonadiabatic spin torque. *Phys. Rev. B*, 79(13):134410, 2009.
- [18] Junya Shibata, Yoshinobu Nakatani, Gen Tatara, Hiroshi Kohno, and Yoshichika Otani. Current-induced magnetic vortex motion by spin-transfer torque. *Phys. Rev. B*, 73(2):020403, 2006.
- [19] L. Heyne, M. Kläui, J. Rhensius, D. Ilgaz, U. Rüdiger, A. Fraile Rodriguez, F. Nolting, L. J. Heyderman, J. U. Thiele, and F. Kronast. Direct determination of large spin-torque non-adiabaticity in vortex core dynamics. *submitted*, 2010.
- [20] Gen Tatara and Peter Entel. Calculation of current-induced torque from spin continuity equation. *Phys. Rev. B*, 78(6):064429, Aug 2008.
- [21] L. Heyne, J. Rhensius, A. Bisig, S. Krzyk, P. Punke, M. Kläui, L. J. Heyderman, L. Le Guyader, and F. Nolting. Direct observation of high velocity current induced domain wall motion. *Appl. Phys. Lett*, 96:032504, 2010.
- [22] M. Kläui, C. A. F. Vaz, J. A. C. Bland, W. Wernsdorfer, G. Faini, E. Cambril, L. J. Heyderman, F. Nolting, and U. Rüdiger. Controlled and reproducible domain wall displacement by current pulses injected in ferromagnetic ring structures. *Phys. Rev. Lett.*, 94:106601, 2005.